

Overview of **research infrastructures** in the **Earth and environment system**

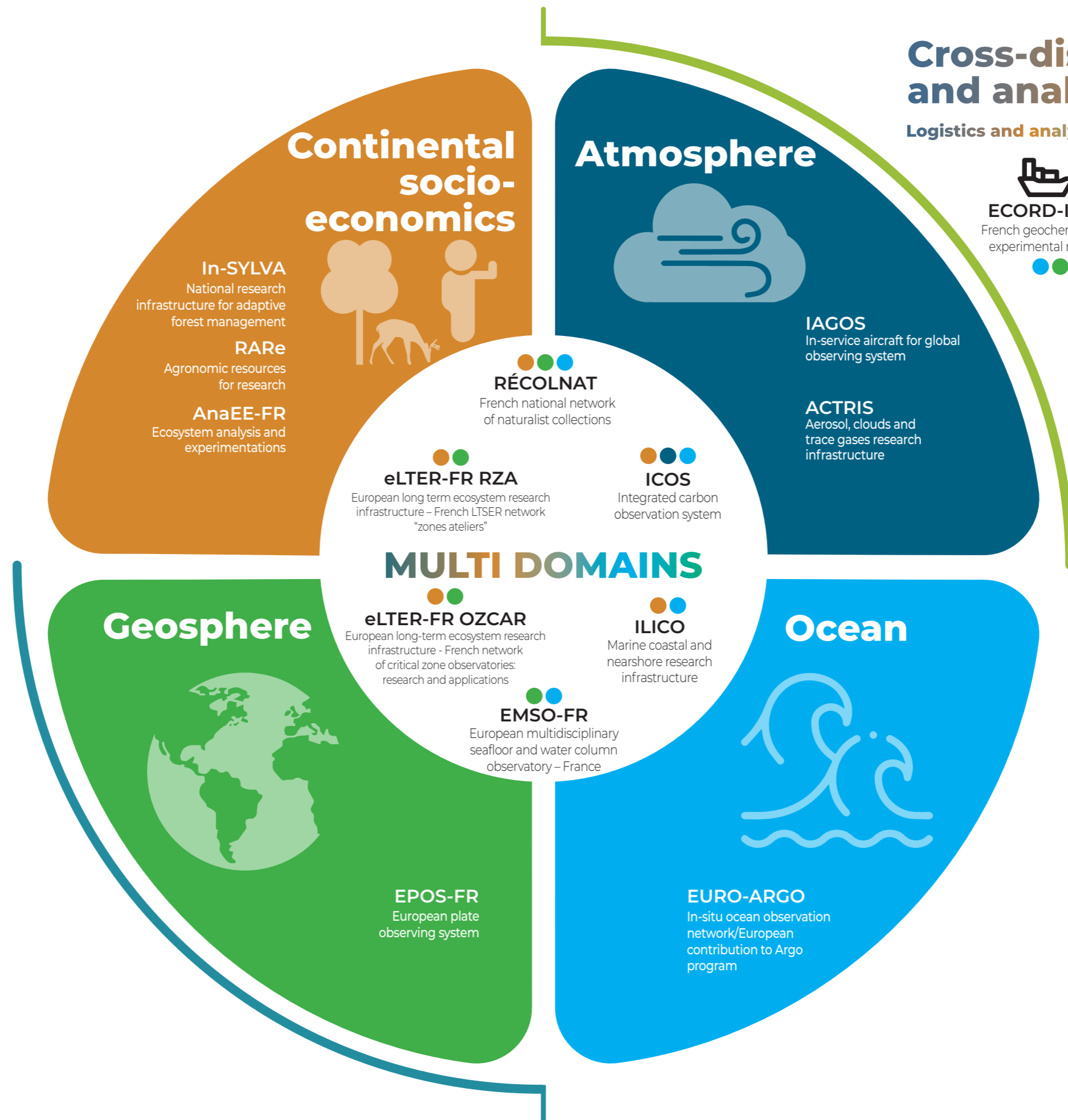
Key figures

21 accredited research infrastructures, of which **17** are part of European and international networks

And more than

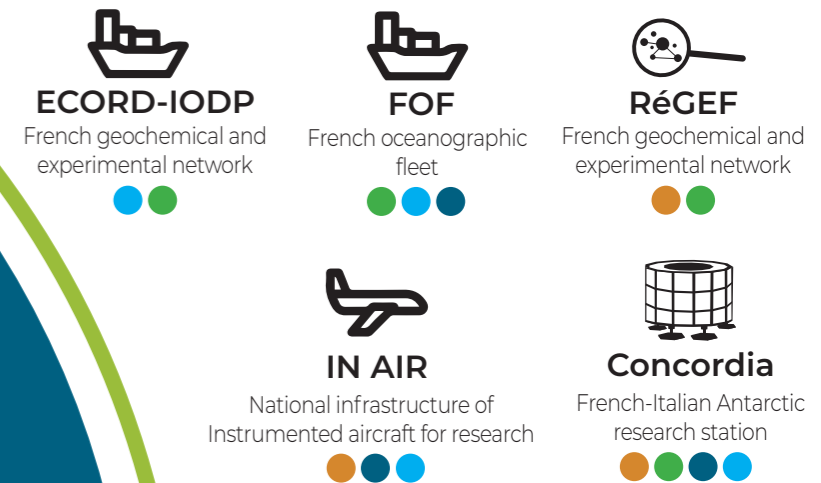
100 research organizations, universities and institutions

110 petabytes of data produced annually



Cross-disciplinary logistics and analytical facilities

Logistics and analytical equipment



e-Infrastructures

